

Here at Outhouse Designs, it's all about the art! If you decide to provide artwork for your project, using one of the following formats is more cost effective and helps the job go smoother, quicker and more accurately. If you still have questions after reviewing the information below, please feel free to call us or send an email to art@outhousecustom.com.

ARTWORK SUBMISSION REQUIREMENTS:

SUBMISSION:

- upload to our ftp site found on our website
- CD or Zip
- Email files no larger than 5 megs to: art@outhousecustom.com
- Provide camera-ready black & white art (no fax or photocopies)

OUTHOUSE PRIMARY GRAPHIC SOFTWARE:

- Adobe Illustrator CS
- Adobe Photoshop CS

ACCEPTABLE FILE FORMATS:

- Vector Images: Illustrator, Freehand or Corel "AI", "EPS", or "PDF" (please convert all text to outlines/paths)
- Raster images: Photoshop "PSD", "BMP", "TIF", "JPG" or "PDF" (art sized to 100% for final output; resolution at least 200 dpi)

COMPRESSION SOFTWARE:

- StuffIt
- WinZip

IMPORTANT:

- Send vector art when possible
- Always convert text to outlines
- Please specify colors to be used
- Avoid sending artwork placed in a program such as Word, Powerpoint or QuarkXpress.

ARTWORK CHARGES:

- Art charges will be incurred if artwork needs to be touched up, reconstructed, color separated or manipulated in any way. These charges will be acknowledged before proceeding with the order.
- Graphic services are billed at \$20 per half hour
- PMS color matching is \$20 per color

SPECIAL:

REMEMBER:

- If you provide us with original art and/or disks, it is our policy to keep them for 90 days, after which we can not be responsible for their fate. When you pick up your order, remember to ask for your materials back.

TRADEMARKS/LOGOS:

- Outhouse Designs assumes no responsibility for determining who does or does not hold claim to a trademark or logo.

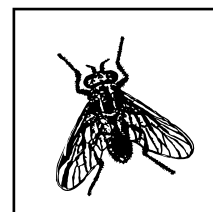
FILE FORMATS: OUTPUT APPEARANCE:

ACCEPTABLE

VECTOR:

Illustrator, Freehand or Corel Draw "EPS" File

**Resolution is not a factor*

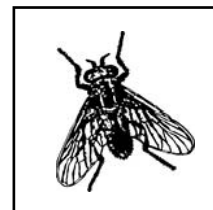


RASTER:

Photoshop "PSD", "BMP", "TIF", "JPG" or "PDF"

File resolution at least 200 dpi with artwork sized at 100%

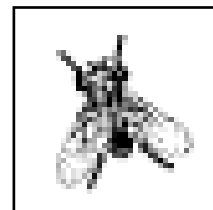
**Resolution dependent*



UNACCEPTABLE

WEB IMAGES:

Photoshop "GIF" or "JPG" files at 72 dpi



**Most images found online will not work for reprinting on garments. These images may appear to be clean and usable on your monitor, but print pixilated (rough edges).*

REQUIRED DEPOSIT - 50% UP FRONT

Clients who do not have terms (i.e. credit with Outhouse) are required to deposit 50% up front. The remaining balance will be due at delivery or pick-up.

MINIMUM ORDER QUANTITY - 36 PIECES

Minimum based on each individual job setup.

ART CHARGES - \$20 PER HALF HOUR

Providing a highly talented art department separates us from the competition. We hire only the best and it shows with our exceptional creativity and top quality designs. Should you choose to have our custom artists design for your needs, please be mindful of the following:

- Art charges are incurred in 30 minute increments.
- Charges include design creation AND color separation time.

ARTWORK RIGHTS

- Artwork created for our clients is intended only for application to product(s) we offer.
- Outhouse Designs retains all rights to ORIGINAL artwork created in-house. This includes all digital files and film separations. However, we may allow you to purchase the rights to artwork we create for an additional fee of \$500.
- Reproduction of Outhouse artwork for any purpose is strictly prohibited without written consent from the art department.
- Outhouse Designs assumes no responsibility for determining who does or does not hold a claim to a trademark/logo.

STANDARD PRODUCTION TIME - 3 DAYS

To avoid scheduling conflicts, there is a minimum 3 DAY production turnaround time FROM THE DAY WE RECEIVE ARTWORK APPROVAL. Orders can not go into production without prior artwork approval. Please keep this in mind if there are defined due dates for your order, as rush charges may be incurred.

PRINTING ACCURACY

Our art department works to ensure designs will print as accurately as possible. However, achieving a perfect color match to a paper/digital proof on jobs requiring 4 color or simulated process printing is unlikely. Small color variances (5-10%) can be expected due to differences in garment materials, variances in ink opacities and the overall blending of inks. This holds especially true if we are asked to print fewer colors than recommended due to cost constraints.

RUSH CHARGES

Any job that requires production in less than our standard 3 day turnaround is considered a rush order.

2 Day Rush Charge = \$50 Same Day Rush Charge = \$100

INK COLOR CHANGES - \$10 PER COLOR/SCREEN

The Outhouse art department works to minimize the need for ink color changes and provide the most cost effective method of printing. In some instances, ink color changes may be necessary when printing on various garment colors.

PMS COLOR MATCH - \$20 PER COLOR

In addition to 4 color process inks, we provide over 50 custom spot color inks to choose from. However, if certain jobs require a specific color, we are capable of pantone color matching. Our art staff may suggest using a stock color (when close to a requested pms color) to help avoid additional color matching charges.

DELIVERY CHARGES - \$20 LOCAL ONLY*

* Within Austin city limits.

RESTOCKING FEE - 15%

Applies to any cancelled job when product has already been ordered.